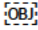
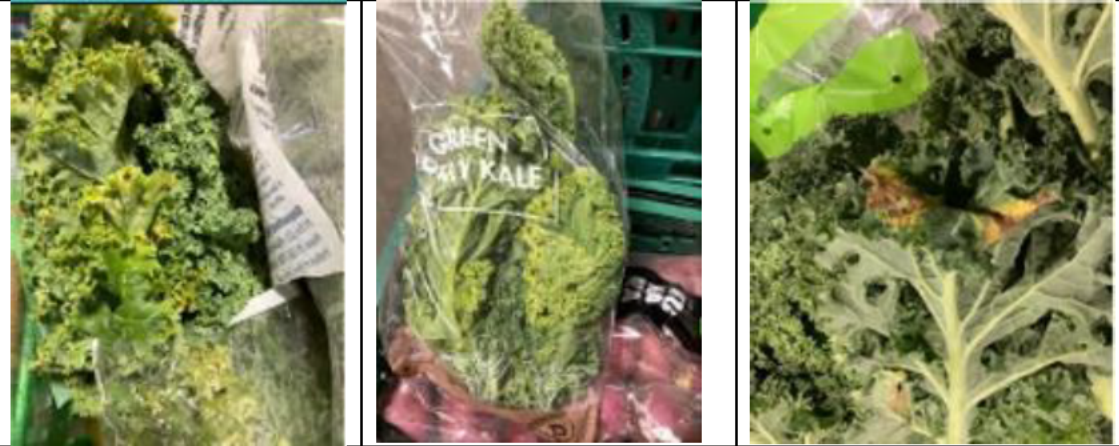


## Produce Specification: Kale

<b>General Information:</b>
<p>This specification is for supply of Kale into FSSI Produce DC, any variation to this must be approved by the FSSI Merchandise Manager for Produce</p> <p>All suppliers/growers must be certified in one of the below.</p> <p>NZGAP with Social Practice Add On GlobalGAP GRASP Sedex Smeta</p>
<b>General Attributes:</b>
<p>Fresh in appearance. Fully developed; crisp leaves with firm stalks; dry and sound; Shape and colour must be true to variety. Size to be consistent within sleeve.</p>
<b>Temperature:</b>
<p>Optimum storage temperature is 4°C.</p>
<b>Labelling:</b>
<p>All crates / cartons must be labelled with: </p> <ul style="list-style-type: none"><li>• Suppliers trading name.</li><li>• Suppliers trading address.</li><li>• Pack date</li><li>• Product name and/or Article Description</li><li>• Variety</li><li>• Count</li><li>• Grade</li><li>• Shipper Barcode</li><li>• GAP Number and GAP Name</li></ul> <p>Prepacks are to have product visible, and be labelled with, at minimum, retail barcode, weight / count if applicable, and pack date.</p>
<b>Crates and Bins:</b>
<p>If product is supplied in a Bin or Crate, bin and crate must be collapsible (unless otherwise stated) and be from an approved supplier.</p>
<b>Defect List:</b>
<p><b>Unacceptable (0% tolerance)</b></p> <ul style="list-style-type: none"><li>• Yellowing; Soiling; Pests; Pest / disease damage; Bruising or physical damage; Dehydrated; Foreign smell or taste; Frost / water damage; Soft or rubbery leaves.</li></ul>

**Photos Of Defects**



**Yellowing**

**Dehydration**

**Rot**

**Table of Articles**

Article	Description	Minimum leaf length (Winter) (mm)	Minimum leaf length (Summer) (mm)	Count	Packaging
3295580	PAMS KALE GREEN EA NZ	180	280	10	Crate
3248971	KALE GREEN EA NZ				