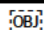


Produce Specification: NZ Kiwifruit

<u>General Information:</u>
<p>This specification is for supply of NZ Kiwifruit into FSSI Produce DC, any variation to this must be approved by the FSSI Merchandise Manager for Produce</p> <p>All suppliers/growers must be certified in one of the below.</p> <p>NZGAP with Social Practice Add On GlobalGAP GRASP Sedex Smeta</p>
<u>Shape:</u>
<ul style="list-style-type: none"> ➤ <u>Green</u>- Round to slightly oval, according to variety. No more than 10% dropped shoulder. Flats acceptable. ➤ <u>Gold</u> - Oval with distinctive enlarged and flattened stub at the blossom end ➤ <u>Red</u> - Oval with sloping blunt, curved ends. Distinct enlarged and flattened stub at the blossom end
<u>Overall Visual Appearance:</u>
<ul style="list-style-type: none"> ➤ <u>Green</u>- Clear brown to deep brown, with or without background greenish tinge; green flesh. Whitish core, black seeds. Firm to touch, sweet, juicy. No off odours or tastes. ➤ <u>Gold</u> - Golden brown or deep brown skin, golden yellow to translucent yellow flesh. White core and black seeds. No green areas. Firm to touch, sweet, juicy, and low acidity. No off odours or tastes. ➤ <u>Red</u> - Brown to olive green skin, red to red-brown flesh, white core, and black seeds. Delicate firm skin, sweet, juicy, and low acidity. No off odours or tastes.
<u>Temperature:</u>
<p>Arrival temperature should be 0-4 degrees</p>
<u>Labelling</u>
<p>All crates / cartons must be labelled with: </p> <ul style="list-style-type: none"> • Suppliers trading name. • Suppliers trading address. • Pack date • Product name and/or Article Description • Variety • Count • Grade • Shipper Barcode • GAP Number and GAP Name
<u>Crates and Bins:</u>
<p>If product is supplied in a Bin or Crate, bin and crate must be collapsible (unless otherwise stated) and be from an approved supplier.</p>

Defect List:

Unacceptable (0% tolerance on surface of fruit) – No fruit allowed.

- Chill damage, physical damage. Rot / waste, disease damage.

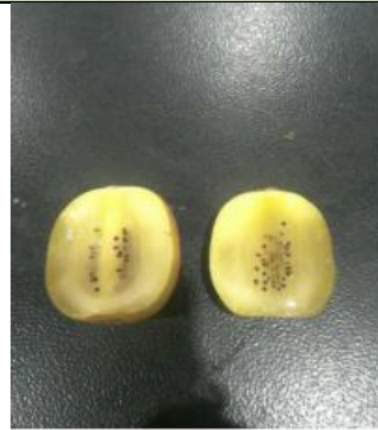
Major (2% tolerance on surface of fruit) – No more than 3 pieces per carton

- Sunburn. Rough scarring.

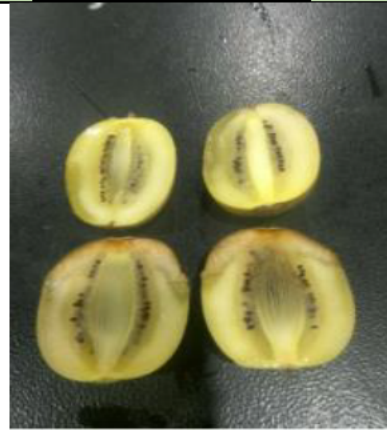
Minor (10% tolerance on surface of fruit) - No more than 5 pieces per carton

- Light blemishes (2.5sq cm accumulated marking).

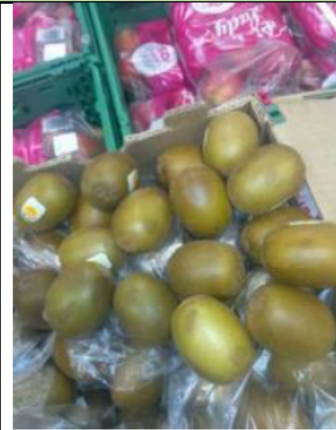
Photos Of Defects



Soft bruised flesh.



Brown flesh.



Bruised product.



Soft shrivelled skin.



Scuffs and skin marks.



Rotting

Table of Articles

Article	Description	Fruit Size	Stage	Count	Packaging
4338451	KIWIFRUIT GOLD 6KG NZ PURCHASE	93 – 115 grams (33 – 36ct) 115 – 135 grams (25 – 30ct)	Firm	6KG	Cardboard Tray
4191363	KIWIFRUIT GOLD LOOSE 15KG NZ PURCH	73 – 93 grams (39 – 42ct)	Firm	15KG	Crate
3235375	PAMS KIWIFRUIT GOLD 1KG NZ	70 – 73 grams	Firm	14EA	Netlon/Crate
4202495	PAMS KIWIFRUIT GOLD 680G NZ	70 – 73 grams	Firm	20EA	Pun/Crate
3170850	KIWIFRUIT GOLD 750G NZ	52 – 70 grams	Firm	20EA	Netlon/Crate
3167875	KIWIFRUIT GOLD PUN NZ	70 – 73 grams	Firm	20EA	Pun/Crate
4276852	KIWIFRUIT GREEN 10KG NZ PURCHASE	93 – 115 grams (33 – 36ct) 115 – 135 grams (25 – 30ct)	Firm	10KG	Cardboard Tray
3167931	KIWIFRUIT GREEN 15KG NZ PURCHASE	73 – 93 grams (39 – 42ct)	Firm	15KG	Crate
4276700	KIWIFRUIT GREEN 6KG NZ PURCHASE	93 – 115 grams (33 – 36ct) 115 – 135 grams (25 – 30ct)	Firm	6KG	Cardboard Tray
4200258	PAMS KIWIFRUIT GREEN 680G NZ	73 – 93 grams	Firm	20EA	Pun/Crate
4212180	KIWIFRUIT GREEN 680G NZ	73 – 93 grams	Firm	20EA	Pun/Crate
3235374	PAMS KIWIFRUIT GREEN 1KG NZ	73 – 93 grams	Firm	14EA	Netlon/Crate
4336823	KIWIFRUIT RED 5KG NZ PURCH	92 – 114gram (33 – 36ct)	Firm	5.6KG	Cardboard Tray
3145421	KIWIFRUIT RED 10KG NZ PURCH	72 – 92 grams (39 – 42ct)	Firm	10KG	Cardboard Tray
4236166	KIWIFRUIT RED 4KG NZ PURCH	92 – 114grams (33 – 36ct)	Firm	4KG	Cardboard Tray
4236520	KIWIFRUIT RED 600G EA NZ	52 – 70 grams	Firm	12EA	Pun/Crate
4265411	KIWIFRUIT GREEN 9KG IMPORT PURCHASE	95-115gram (27-30ct ita)	Firm	9KG	Cardboard Tray
4337612	KIWIFRUIT GREEN 10KG IMPORT PURCHASE	95-115gram (27-30ct ita)	Firm	10KG	Cardboard Tray
3168171	KIWIFRUIT GREEN 800G IMPORT	80-95gram (33-39ct ita)	Firm	10EA	Netlon/Crate
3168172	KIWIFRUIT GREEN PUN IMPORT	80-95gram (33-39ct ita)	Firm	12EA	Pun/Crate